



Worksoft provides SAP customers with unmatched Application Lifecycle Management solutions across lifecycle events such as major upgrades, legacy application integration, consolidations, support packs, compliance, process management, testing and training.

Our solutions maximize the value of your SAP investments by minimizing risk and leveraging hidden information from SAP and its peripheral systems that are already in place to support your business.

To learn more about Certify Executive Dashboard™ and Worksoft's automated functional testing solutions, visit
www.worksoft.com
or call
1.866.836.1773.

WORKSOFT®
TEST SMARTER, DELIVER FASTER.

Certify Executive Dashboard™

Worksoft Certify Executive Dashboard provides enterprise-wide access to Key Performance Indicators (KPIs) and quality metrics.

Delivering software solutions that continually address changing business needs is critical for on-going competitiveness and profitability. Ensuring that these solutions are delivered with minimal business risk and operational costs requires that key decision makers have up-to-the-minute access to critical quality-related information. The Worksoft Certify Executive Dashboard aggregates and displays quality metrics from test projects across the enterprise to provide at-a-glance answers to application readiness questions, such as:

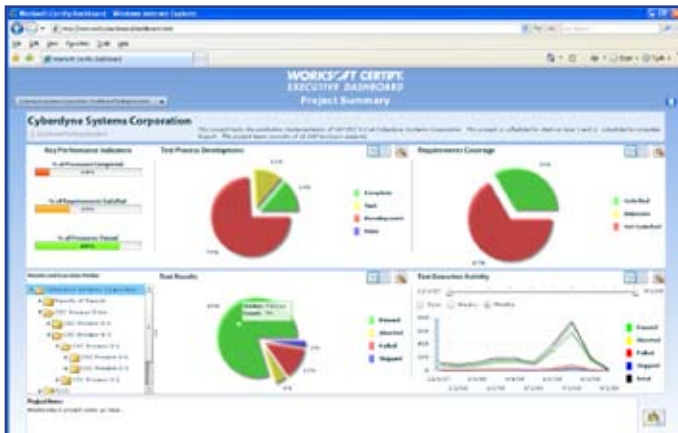
- Is the application ready for deployment?
- What is my test coverage?
- Have all test requirements been satisfied?
- What is the current testing activity?
- Where are the biggest risk areas?

Consistent, Real-Time Information

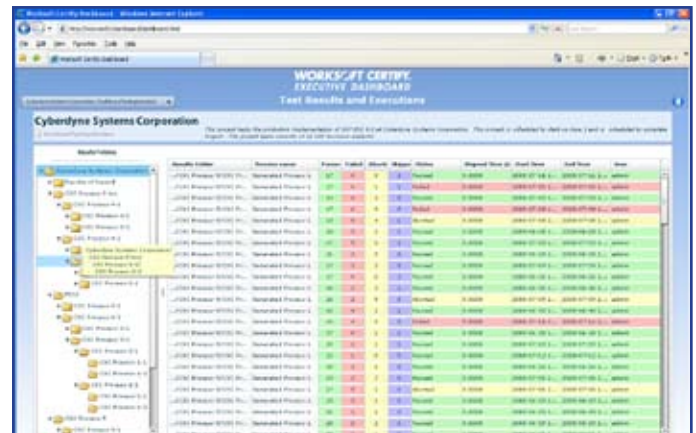
The Dashboard's SOA-based architecture leverages Worksoft's patented data-driven test automation solution, Worksoft Certify, to allow real-time access to key information from test projects world-wide. This information is presented to the user through customizable web-based displays. Full drill down capabilities ensure that users at all levels within the organization have the information they need for improved decision making and optimal risk management.

The Dashboard's Project Overview provides "stop light" colored Key Performance Indicators with quality-related information across dozens, or even hundreds of complex, heterogeneous testing environments. Summary information for each project focuses on the following key test areas:

- The satisfaction of test requirements
- The progress of developing and completing test process
- The results of test executions
- The test activity over time



Certify Executive Dashboard



Customizable, color coded displays highlight potential problem areas

Tracking Test Requirements

The first step in managing test projects is identifying and documenting the key tests that must be successfully executed in order to determine the application's readiness for production. Worksoft Certify provides a hierarchical framework for defining top level, or "parent" requirements and an unlimited number of subordinate "child" requirements. The satisfaction status of each requirement is automatically calculated based on the execution status of test processes linked to any level of the requirement hierarchy. The Executive Dashboard graphically displays the organization's progress in satisfying test requirements. Drill down capabilities allow users to review specific requirement objectives and the status and description of all linked test processes.

Test Process Development

Worksoft Certify's unique script-free approach to creating tests allows business analysts and functional users to take a lead role in developing and maintaining tests that ensure that the delivered application is fit for purpose. The dashboard's graphical display allows management to track the completion of test processes against established milestones to quickly identify and correct risks to the overall test schedule.

Test Execution Results

Summary and detailed information on each test execution is available from the Dashboard for the test project as a whole or for specific Certify Results folders. The color coded display highlights failed tests and associated execution statistics. An execution history is also provided detailing the number of passed, failed, aborted, and skipped executions for each test process.

Test Execution Activity

The Dashboard's Test Execution Activity graph provides historical trend information comparing execution results over time by execution status. Users interact directly with the charts to specify the precise timeframe on which to report, from a single day, to the entire life of the testing project.

Enhanced Project Team Communication

The Executive Dashboard also enhances test team communication by listing all individuals and groups assigned to each testing project and allowing emails to be created and sent directly from the dashboard through the organization's corporate email facility. The Dashboard also allows project notes and announcements to be entered and displayed for team-wide notifications.

Benefits

- Identifies and quantifies the overall effectiveness of testing efforts.
- Provides management and executives the visibility required to improve risk management decisions while achieving critical business objectives.
- Allows enhanced software quality and increased pace of delivery.

Worksoft Application Lifecycle Management Solutions

Worksoft Certify

Certify Live Learn

Certify Live Compare

Certify Live Model

Certify Live Data

Are you ready for high performance testing?

Call us now at 866.836.1773 x141 to learn more and set up a demo time.